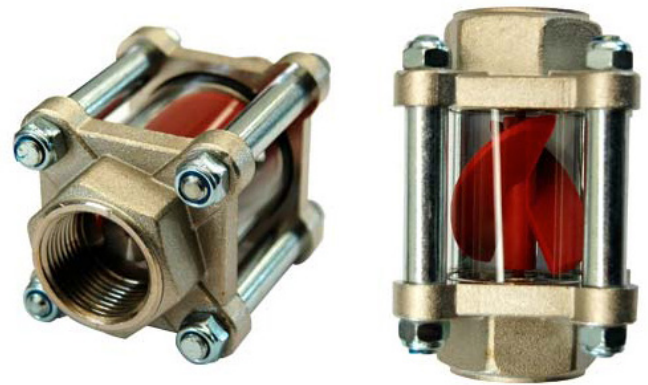


RIV900 Propeller controls

Designed to control the circulation of liquids, they are suitable for the flow of water, oils, petrol, gas oil and all other liquids except corrosive liquids.

- Body in chromed zinc brass alloy with hexagonal boss and internal thread for the connection.
- Reversible propeller in nylon-glass.
- Tube in Pyrex glass.
- Max. operating temperature 90°C with nitrile seal and 180°C with Viton seal and aluminum propeller.
- Possibility Viton and aluminum propeller.



CE

Type	Connection	A	B	C	CH.	FIG.	Min.flowrate (Lt/min)	Max.flowrate (Lt/min)	Max. pressure (Bar)	Max. temp.(°C)	Max.temperature with Viton seals (°C)
RIV900-05	1/4 " GAS	64	22	37	17	1	0,6	3	30	90	180
RIV900-10	3/8 " GAS	94	31	58	27	1	1,1	5,5	30	90	180
RIV900-15	1/2 " GAS	94	31	58	27	1	1,3	6,3	30	90	180
RIV900-20	3/4 " GAS	107	47	67	42	2	1,6	17	30	90	180
RIV900-25	1 " GAS	107	47	67	42	2	2,2	27	30	90	180
RIV900-32	1"1/4 GAS	157	66	80	60	2	9	55	15	90	180
RIV900-40	1"1/2 GAS	157	66	80	60	2	11	60	15	90	180

